



Hema
maps

HX-2+

GPS Navigator

Prepared to explore.



HEMA
PROTECT

3-YEAR
WARRANTY

Quick Start Guide

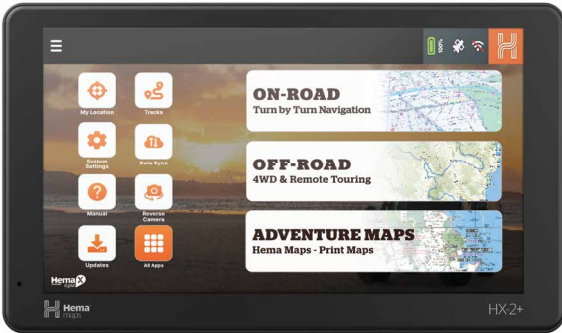
hema.com.au

Welcome to your new Hema Maps HX-2+ GPS Navigator

This guide will help you get started with your new HX-2+ so you can get out and explore.

Box Includes

Hema Maps HX-2+ GPS Navigator



Suction Mount



Hard Carry Case



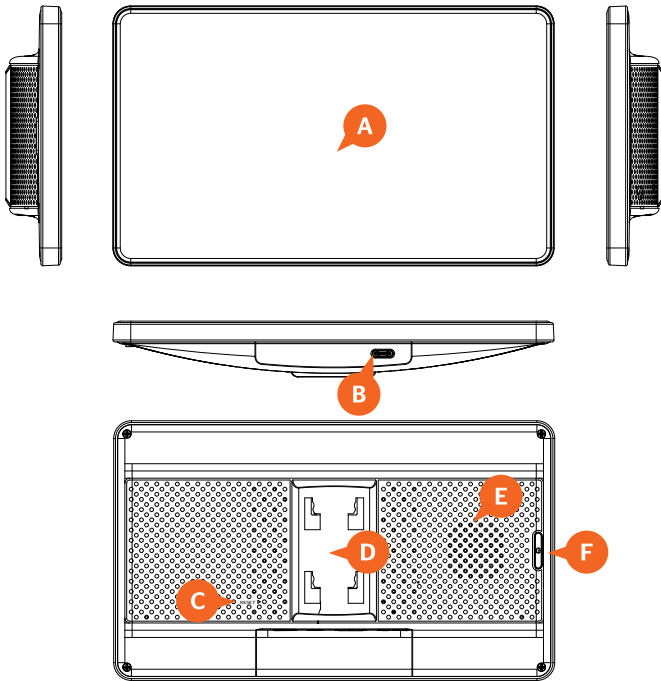
USB-A to USB-C Heavy Duty Cable



12V/24V 2A Car Adaptor



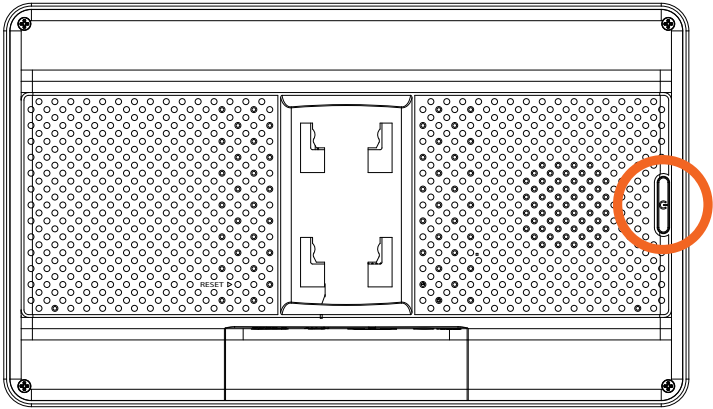
Getting to know your HX-2+



- A** Touch screen
- B** Charging port (USB-C)
- C** Reset button
- D** Mounting slot
- E** Speaker
- F** Power button

Important: Please fully charge your HX-2+'s battery as soon as possible. During charging, do not leave the HX-2+ lying or mounted on your dash-board where it will be exposed to extreme temperature conditions.

Switching the HX-2+ on and off



Switching on: Press the power button for 2 seconds and release. The HX-2+ will display an animation followed by the main screen.


Switching off: The HX-2+ can be completely switched off or put into Sleep Mode. Pressing the power button for 2 seconds while the HX-2+ is switched on will display a confirmation page asking you to “Power off” or “Restart”. Select “Power off” to completely switch off the HX-2+.

Registering your HX-2+ to the Hema Maps Cloud: The first time you switch on your HX-2+ you will be guided through the setup process by a Setup Wizard. This will help connect your HX-2+ to the Internet and allow you to sign in to or create your Hema Maps Cloud account.

The Hema Maps Cloud account grants you access to connect your HX-2+ to the cloud.hemamaps.com services including trip planning, track recording, personalised waypoints and POIs and syncing your information across multiple devices.

Important: The HX-2+ needs connected GPS reception to set the correct date and time to register.

Signing in from your HX-2+

<  >

Sign up to the Hema Maps Cloud

Registering allows you to quickly access technical support and backup any saved trip data you may have to your online Hema account

Existing members

Username _____

Password _____

SIGN IN TO MY ACCOUNT **FORGOT USERNAME OR PASSWORD?**

New members

CREATE NEW ACCOUNT

REGISTER ME LATER

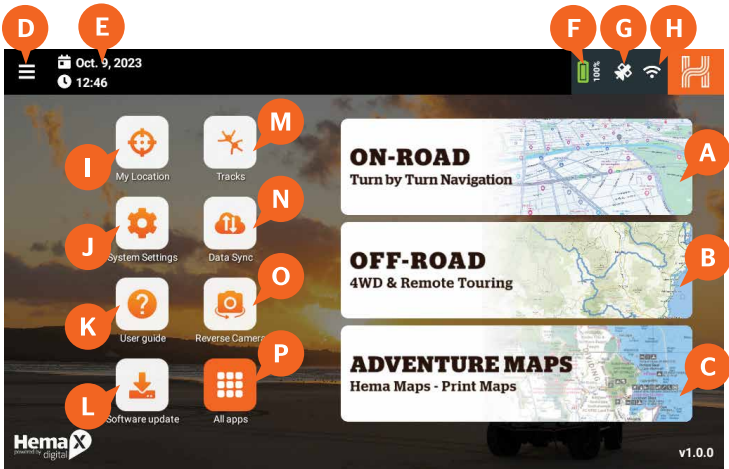
It is highly recommended you sign in to your HX-2+ via a registered Hema Maps Cloud account, as signing in will allow you to receive regular updates and support for your HX-2+, to back up and share trip data, and to unlock premium map content and navigation features available to you.

If you choose not to register your HX-2+ with a Hema Maps Cloud account, you will not have access to synchronise your recorded tracks or saved trips across your devices. You will also restrict your access to premium map and content updates available through your Hema Maps Cloud account.

NOTE:

1. By signing up for a Hema Maps Cloud account you are accepting the HX-2+ and Hema Maps Cloud account terms and conditions and the Hema Maps Pty Ltd Privacy Policy.
2. You can initiate the setup process again from the tutorial menu at any time in order to register a new Hema Maps Cloud account or you can login using existing Hema Maps Cloud account credentials.
3. An existing HX-1 Explorer account is not compatible with the HX-2+. You will need to transfer your Explorer account to the new Hema Maps Cloud account via <https://cloud.hemamaps.com/migrate/start>.

The main screen



- A** ON-ROAD - Turn by Turn Navigation
- B** OFF-ROAD - 4WD and Remote Touring
- C** ADVENTURE MAPS - Hema Maps Print Maps
- D** Drop down menu including trips, tracks, routes

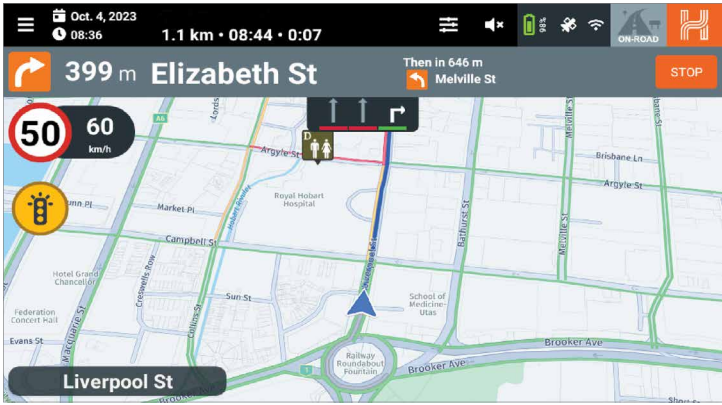
- E** Date and time
- F** Battery indicator
- G** Satellite Status

- H** Wi-Fi indicator
- I** My Location
- J** Device Settings
- K** Quick Start Guide
- L** Updates
- M** Navigation button
- N** Data Sync
- O** Reverse Camera*
- P** Apps

*Optional reverse camera sold separately

Important: The HX-2+ has three primary functions; ON-ROAD for turn by turn street navigation (ideal for urban driving), OFF-ROAD designed for remote and 4WD exploration and ADVENTURE MAPS granting access to Hema Maps' catalogue of iconic Australian print maps.

ON-ROAD

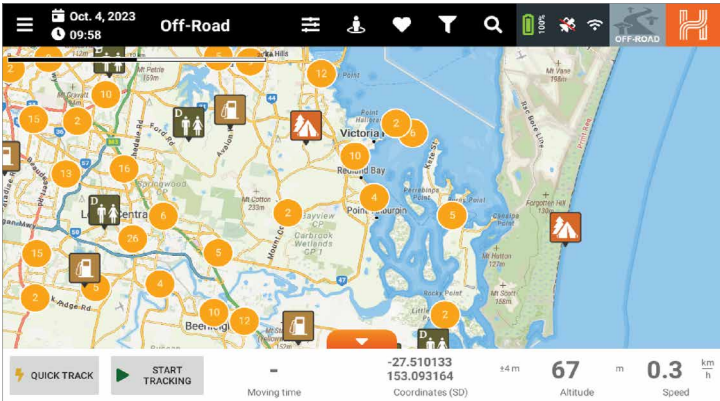


The HX-2+ On-Road function provides detailed navigation, primarily for on-road / urban driving, and is powered by HERE Technologies - the global leader in in-car navigation.

The On-Road platform provides:

- Detailed turn-by-turn navigation
- Voice and display guidance
- Multi Route Options
- Integrated POI search
- Speed, school and navigation alerts
- Location/Street Address search
- Web location search (online only)
- Track Recording
- Trip/Location status bar
- Live traffic alerts (*if connected)
- Hema Maps POIs overlaid
- One-click toggle to OFF-ROAD or ADVENTURE mode

OFF-ROAD



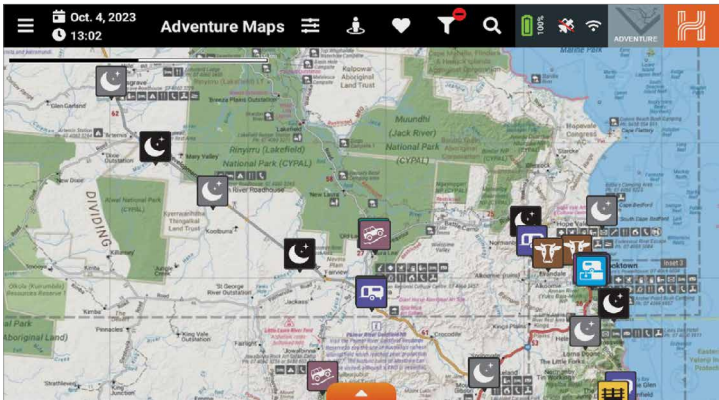
The HX-2+ Off-Road function is the centrepiece of the HX-2+ which includes the new Hema Maps Explorer Map and leverages core functionality of the new Hema Maps Cloud to sync tracks and other data.

The Off-Road system is purpose built to aid users to navigate in remote and off-road locations by leveraging the detail and styling of Hema Maps Explorer Map.

The HX-2+ Off-Road function includes:

- Online / Offline Hema Maps Explorer Maps
- Multiple Map Layers (including Satellite/Hybrid - online only)
- 150,000+ Points of Interest (including Hema Maps verified POIs and 4WD tracks)
- Search tracks, trips and favourite locations
- Full track recording capability
- Navigate to location
- Follow pre-existing tracks
- Load featured tracks
- Tilt / rotate map
- Map centre, map lock and zoom

ADVENTURE MAPS



HX-2+ Adventure Maps bring to life the Hema print maps to give users the ability to view highly detailed maps of Australia. The static nature of Adventure Maps allows users to retain context for their local surroundings plus detailed navigation / location information for these remote areas.

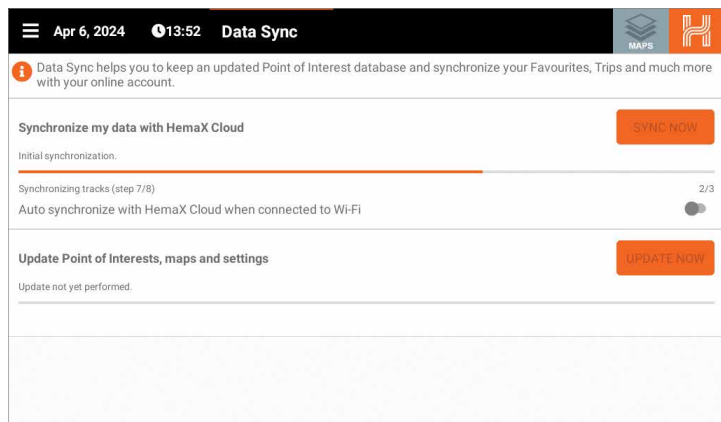
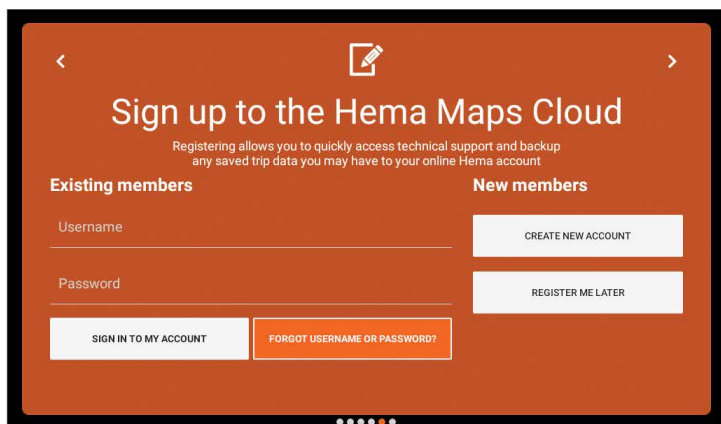
The Adventure Maps function includes:

- Hema Maps Print Maps including Iconic Map Series, Regional/Remote Maps, State Maps, Australia wide maps
- Ability to display other map layers (via subscription)
- Ability to overlay the HX-2+ Points of Interest
- Full track recording capability
- Navigate to location
- Map centre, map lock and zoom
- Embedded Hema Maps POIs

The HX-2+ is powered by HemaX Digital software.



Hema Maps Cloud account



The Hema Maps cloud is an account management system that maintains all your HX-2+ information in the “cloud” and allows you to update and synchronise the information to make the most of your HX-2+.

The Hema Maps Cloud stores your information in a secure manner and allows you to save, store and share information that you create across all Hema Maps Cloud products.

Hema Maps Cloud account

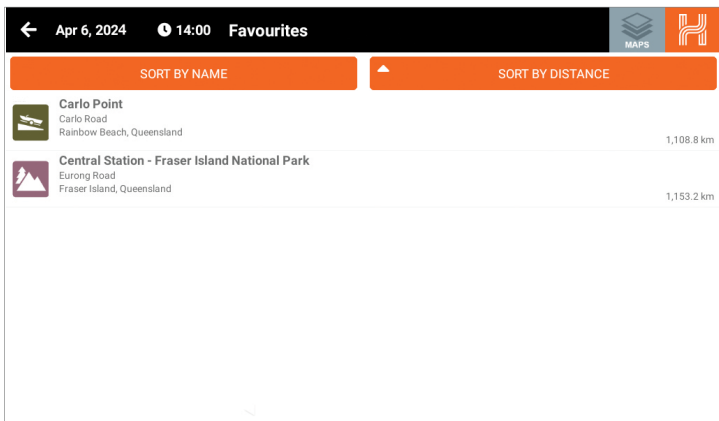
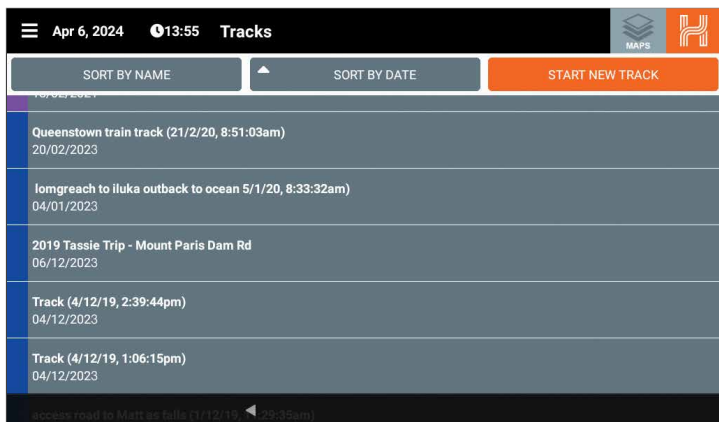
The Hema Maps Cloud also provides the ability for you to transfer your old tracks, waypoints and photos from your old Explorer Cloud to ensure you can keep all your journeys in one place.

Hema Maps Cloud functionality on the HX-2+ includes:

- Download Featured Tracks
- Manage your subscription
- Set preferences
- Save and export trip plans / track recording across your devices
- Create your own favourite lists and personal waypoints / POIs
- Unlock premium subscription options across other platforms
- Stay up to date with latest news and product information
- Update map packs / software releases / premium features
- Register your devices at cloud.hemamaps.com

Important: The Hema Maps Cloud information stores your personal information in accordance with the Hema Maps Pty Ltd Privacy Policy and the Hema Maps Cloud Terms and Conditions.

Sync your Hema Maps Cloud account



GPS Screens and Location Services

← Satellite Status

ID	C/N ₀ (dB-Hz)	Fix	Azimuth °	Elevation °
26	20.9	✓	241°	23°
15	19.8	✓	231°	8°
14	19.7	✓	280°	16°
23	13.7	✓	306°	52°
195	0	✗	201°	77°
29	0	✗	116°	74°
129	0	✗	333°	55°
20	0	✗	295°	53°
18	0	✗	218°	47°
15	0	✗	68°	44°
193	0	✗	339°	36°
194	0	✗	345°	30°
25	0	✗	344°	29°

☰ My location

This page allows you to quickly get information about your current location in multiple formats.

Sunrise & Sunset

Sunrise 07:21 	Solar noon 13:29 	Sunset 19:36
----------------------	-------------------------	---------------------

Dawn 06:54	Dusk 20:03
---------------	---------------

Address

3 Wyman Pl, Braeside, Victoria 3195

Signed Degrees

-38.009377 145.107003°

Decimal Degrees

S-38.009377° E145.107003°

Degree Decimal Minute

S-38° 0.562600' E 145° 6.420200'

Degree Minute Second

S-38° 0'.33.756000" E 145° 6' 25.21000"

GPS Screens and Location Services

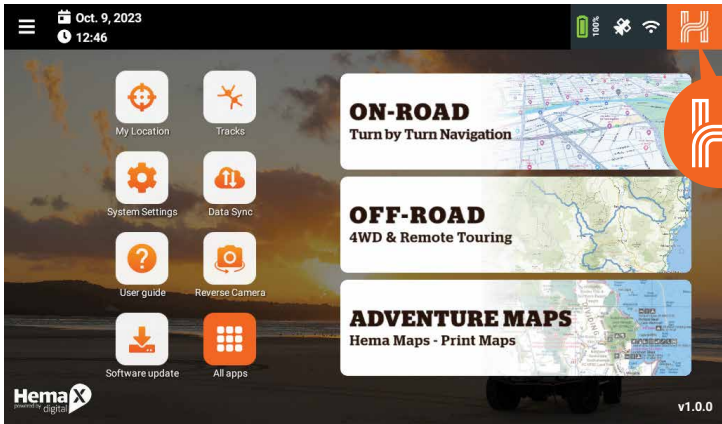
The HX-2+ has a number of features which allow you to validate your current GPS signal(s) and detail your current location.

Satellite Status provides the status and details of the Satellites that the HX-2+ has a fix on.

My Location page provides specific information for your HX-2+'s current location, including but not limited to:

- Sunrise and Sunset
- Decimal / DMS coordinates
- Street Address
- Elevation
- What 3 Words location

Other Functions, Settings and Help



From the Navigation panel:



Pressing the Navigation button allows you to return to the previous screen you were on. If you hold the H down for 2 seconds it will take you back to the Home Screen.



My Location provides you a complete picture of where you are currently located including GPS co-ordinates, What 3 Words and GPS coordinates.



Device Settings

Tapping the Settings button will allow you to make system changes (e.g... set date and time), manage Bluetooth and Wi-Fi connectivity, manage power mode, relaunch the Setup Wizard or display the About Screen. Device Settings: access all the HX-2+ Operating System settings.



Data Sync

Quick access to the data sync module which allows users to update their map data packs.



Help

The Help button will launch the HX-2+ quick start guide manuals. Here you can find information needed to fully operate your Hema HX-2+ GPS Navigator and links to more information.



Updates

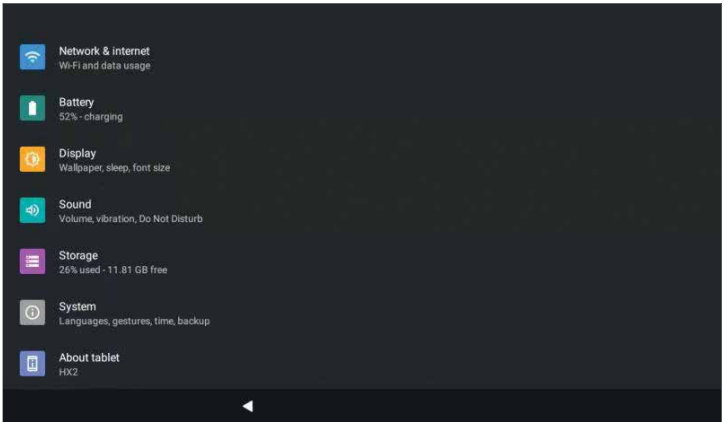
Updates allow you to update the core HX-2+ systems over Wi-Fi and pick up map updates.



App Settings

Quick link to access settings for the Hema Maps HX-2+ product.

Device Settings panel



From the Device Settings panel you can:

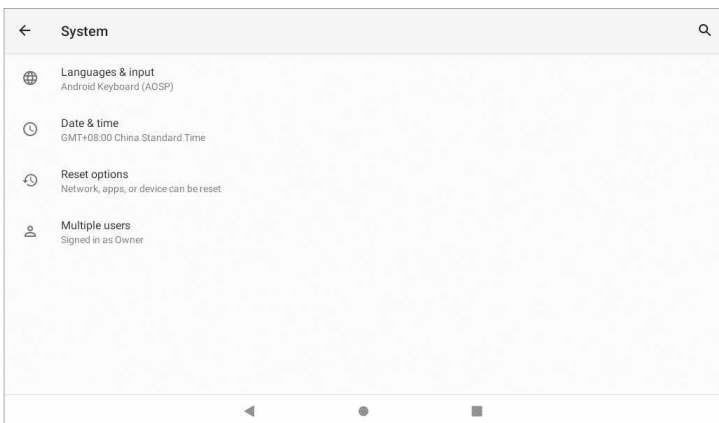
- Set the date and time
- Control brightness and volume
- Configure power settings
- Set the flight mode
- Connect to Wi-Fi networks
- Connect to Bluetooth devices
- Download and install application and map updates
- Check for system updates
- Show device registration and serial number

The Navigation panel will automatically disappear after 15 seconds without interaction.

The navigation panel



Brightness control



System

Wireless Reversing Camera

Optional wireless 1080p waterproof IP68 reversing camera with 170° viewing angle and IR night vision. Easily powered by connection to a reversing light, the reversing camera can provide up to 60m line of sight range.

The reversing camera is activated via the Reversing Camera App icon on the HX-2+ home screen.

Please contact your Hema dealer for more information.

P/N: HX-2+ACCCAM

HX-2+ Specifications

CPU	Allwinner A1333
Operating System	Android 10
Display	7" 1024 x 600 IPS
Touch Screen	Capacitive Touch Screen, 5 points touch
RAM	4GB
Internal Memory	64GB
Battery	850mAH
Battery Life	Up to 2 hours, depending on settings
Physical Buttons	Power
Wireless	802.11 a/b/g/n/ac
Other Communications	Bluetooth® Ver. 5.2
Operating Conditions	-10°C to 60°C* (excluding battery charging)
GNSS	GPS + GLONASS + Galileo + QZSS
Audio	8Ω, 1W
USB Port	USB-C x 1
Software Inclusions	On-Road Navigation - powered by HERE Technologies Off-Road Hema Navigation - includes Hema Maps Explorer Map Adventure Maps - access to Hema Maps Print Maps (Raster) HX-2+ Application Updater Setting App Camera App
Accessories	Windscreen Mount 12V/24V 2A Car Adaptor USB-A to USB-C Lead Hard Carry Case
Dimensions	182.63 x 107.63 x 23.1
Warranty	3 years
Optional Accessories	Wi-Fi Reversing Camera Sun Visor

Warranty terms and conditions

Our goods come with guarantees that cannot be excluded under the Australian Consumer Law. You are entitled to a replacement or refund for a major failure and for compensation for any other reasonably foreseeable loss or damage. You are also entitled to have the goods repaired or replaced if the goods fail to be of acceptable quality and the failure does not amount to a major failure.

This warranty is provided in addition to your rights under the Australian Consumer Law. Directed Electronics Australia Pty Ltd (Directed Electronics) warrants that this product is free from defects in material and workmanship for a period of 3 years from the date of purchase or for the period stated on the packaging. This warranty is only valid where you have used the product in accordance with any recommendations or instructions provided by Directed Electronics.

This warranty excludes defects resulting from alterations of the product, accident, misuse, abuse or neglect. In order to claim the warranty, you must return the product to the retailer from which it was purchased or if that retailer is part of a national network, a store within that chain, along with satisfactory proof of purchase. The retailer will then return the goods to Directed Electronics.

Directed Electronics will repair, replace or refurbish the product at its discretion. The retailer will contact you when the product is ready for collection. All costs involved in claiming this warranty, including the cost of the retailer sending the product to Directed Electronics, will be borne by you.

Indemnity

You agree to defend, indemnify and hold harmless Hema Maps and its subsidiaries and affiliates from and against any and all claims, proceedings, injuries, liabilities, losses, costs and expenses (including reasonable legal fees), including but not limited to, claims alleging negligence, invasion of privacy, copyright infringement and/or trademark infringement against Hema Maps and its subsidiaries and affiliates, relating to or arising out of your breach of any provision of these terms, your misuse of Hema Maps products or its services, or your unauthorised modification or alteration of products or software.

Warranty and warranty disclaimer

Hema Maps has a limited warranty on whereby Hema Maps warrants to you and only to you that this Hema Maps product will be free from defects in materials and workmanship for three (3) years from the date of your purchase (unless a longer warranty period is required by law). The specifics of this Hema Maps limited warranty are covered in this manual.

To the extent possible under governing law, other than the above product warranty for the Hema Maps product, you understand and agree that the Hema Maps products and services are provided on an “as is” and “as

available” basis. Hema Maps makes no warranty that the Hema Maps products and services will meet your requirements or that use of the Hema Maps products and services will be uninterrupted, timely, secure or error-free nor does Hema Maps make any warranty as to the accuracy or reliability of any information obtained through Hema Maps (including third party content), that any defects in Hema Maps products and services will be corrected or that Hema Maps products or services will be compatible with any other specific hardware or service. Further, Hema Maps does not warrant that Hema Maps products or services or Hema Maps servers will provide you with data and content are free of viruses or other harmful components. Hema Maps also assumes no responsibility for and shall not be liable for any damages caused by viruses that may infect your Hema Maps product, computer software, or other hardware.

In the event of any loss, damage or injury, you will not look to Hema Maps to compensate you or anyone else. You release and waive for yourself and your insurer all subrogation and other rights to recover against Hema Maps arising as a result of the payment of any claim for loss, damage or injury. Hema Maps equipment and services do not cause and cannot eliminate occurrences of certain events and Hema Maps makes no guarantee or warranty, including any implied warranty of merchantability or fitness for a particular purpose or that Hema Maps equipment and services provided will detect or avert such incidents or their consequences. Hema Maps does not undertake any risk that you or property, or the person or property of others, may be subject to injury or loss if such an event occurs. The allocation of such risks remains with you, not Hema.

Other than the above product warranty for Hema Maps products, its suppliers disclaim all warranties of any kind, whether express, implied, or statutory, regarding Hema Maps products and services, including any implied warranty of title, merchantability, fitness for a particular purpose, or non-infringement of third party rights. Because some jurisdictions do not permit the exclusion of implied warranties, the last sentence of this section may not apply to you. Hema Maps hereby further expressly disclaims all liability for claims for service failures that are due to normal product wear, product misuse, abuse, product modification, improper product selection or your noncompliance with all applicable federal, state or local laws.

This warranty and warranty disclaimer give you specific legal rights, and you may have other rights that vary by state, province or country. Other than as permitted by law, Hema Maps does not exclude, limit or suspend other rights you have, including those that may arise from the non-conformity of a sales contract. For a full understanding of your rights, you should consult the laws of your state, province, or country. For our Australian customers: please note that this warranty is in addition to any statutory rights in Australia in relation to your goods which, pursuant to the Australian Consumer Law, cannot be excluded.

Limitations of Hema Maps liability

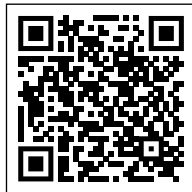
Under no circumstances will Hema Maps be liable in any way for any content, including, but not limited to, the loss of content, any errors or omissions in any content, or any loss or damage of any kind incurred in connection with use of or exposure to any content posted, emailed, accessed, transmitted, or otherwise made available via Hema Maps.

Hema Maps liability for damages, especially for breach of duty or obligation, delay in performance, non-performance, or malperformance shall be precluded, except when these are due to negligent breaches of any significant contractual duty or obligation on the part of Hema Maps. Any liability for negligence is limited to direct losses usually and typically foreseeable in such case. Should the claim for damages be based on wilful or grossly negligent breach of contractual duty or obligation on the part of Hema Maps, the preclusion and limitation of liability mentioned in the preceding sentences will not apply. The preceding preclusion and limitation of liability will also not apply to claims for damages arising out of loss of life, bodily injury or health impacts for which Hema Maps may be liable, or for non-contractual liability.

Some states and countries do not allow the exclusion or limitation of incidental or consequential damages, so the above limitation or exclusion may not apply to you. Additionally, this provision is not intended to limit Hema Maps' liability in the event of Hema Maps' wilful or intentional misconduct.



Hema Maps
Disclaimer



HERE End User Terms
and Privacy Policy

Where to get more help

To ensure you get the best out of your HX-2+, please register your device at cloud.hemamaps.com. You can also register for our regular Hema-University webinars or access our online help guides at kb.hemamaps.com.

How to contact us

Hardware/Troubleshooting support:

Please contact Directed Electronics Australia

Ph: +61 03 8331 4800

Email: service@directed.com.au

Maps/Software support:

Please contact Hema Maps

Ph: +61 07 3340 0000

Email: info@hemamaps.com

Web: hemamaps.com/support



Hema Maps Pty Ltd. hemamaps.com

Hema®, Hema Maps® and Map Patrol® are registered trademarks of Hema Maps Pty Ltd. HERE® is a trademark of Here Technologies LLC. © 2023 Hema Maps Pty Ltd. © 2023 Hemax Digital Pty Ltd. Hema and Hema Maps are used under license by Directed Electronics.

DIRECTED
AUSTRALIA & NZ

Hema

ANOTHER
BRAND FROM
DIRECTED

All Images, Information and Content are Copyright © 2023 Directed Electronics Australia Pty Ltd. All Rights Reserved.